

# MUTOH

Creation, we make it happen...

## Spitfire 65" - 90" Extreme



Mid-range direct-to-vinyl printers



i<sup>2</sup> Intelligent Interweaving print technology incorporated

Impeccable printing quality, effortlessly reproducible at 16.5 m<sup>2</sup>/h

For volume production of signs and prints with medium outdoor durability

Print directly onto uncoated vinyls and banners

Mild solvent friendly concept

2

Intelligent Interweaving



## > IT SIMPLY FITS TOGETHER !

The Spitfire 65 Extreme (1651 mm) and Spitfire 90 Extreme (2280 mm) use Mutoh Mild Solvent Plus inks to print direct to vinyl and perfectly meet the needs of typical sign makers focusing on volume production of outdoor prints with medium-term durability.

Targeted at speed-intensive sign production applications, Mutoh Mild Solvent Plus inks have excellent drying and drop fixation characteristics to perform at high print speeds on a wide range of popular self-adhesive PVC substrates. Spitfire 65/90 Extreme printers deliver impeccable printing quality at 16.5 m<sup>2</sup>/h (@ 540 dpi) on standard uncoated vinyls, time and time again. Typical applications include corporate signs, stage and window graphics, POS displays, backlit box signage, construction announcements, vehicle graphics, indoor graphics such as photo blow ups, floor graphics and much more...



### Worry-Free Printing

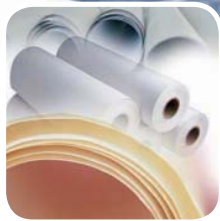
Mutoh's Spitfire Extreme printer is a mild solvent-friendly printer. All parts of the ink supply path (ink supply tubings, head caps, pumps, etc.) are solvent resistant. Daily maintenance is easy & only takes a few minutes.



### Intelligent Interweaving



### High Performance Mild Solvent Plus inks



### Wide Media Acceptance



### User & Mild Solvent Friendly Machine





## Speed / Performance

When speed is the main requirement, the Spitfire Extreme printer engine can reach speeds above 35 m<sup>2</sup>/h. Thanks to Mutoh's unique Intelligent Interweaving print technology, Spitfire Extreme is able to deliver top printing quality time and time again on a wide range of standard uncoated substrates.

Printing onto uncoated self-adhesive PVC, banner, soft signage textile... , impeccable output quality\* is obtained (Spitfire 65 Extreme):

- > For "Sign" images at 5.5, 7, 11 and 13 m<sup>2</sup>/h  
The Sign weave is ideal for the most demanding users. Its focus is clearly on the top notch quality.
- > For "Picture" images at 5.5, 7, 11, 13 and 16.5 m<sup>2</sup>/h  
The Picture weave finds the best balance between speed and quality.

\* Free from typical inkjet printing artefacts such as horizontal banding, ink bleed and media step mismatch banding, even for close viewing distances (< 1 m)



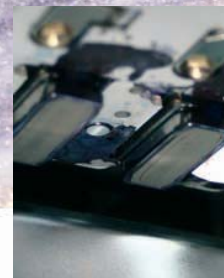
## Wide Media Acceptance

Printing is possible on a wide array of uncoated, eco-coated and coated substrates thanks to the combination of the unique characteristics of Mutoh's Mild Solvent Plus inks, the incorporated piezo print heads and four built-in digitally controllable heating elements. Latest media compatibility information and media profiles are available at all times on [www.mutoh.eu](http://www.mutoh.eu) / [www.mutoheurope.com](http://www.mutoheurope.com).



## High End Piezo Technology

Four latest generation 360-nozzle/colour piezo-electric drop-on-demand inkjet heads with incorporated Dynamic Variable Dot Imaging technology allow production of multiple and unique ink dots and permit individual adjustment of ink droplet size. The result: high speed, high quality printing and low ink consumption.



## Mild Solvent Plus inks

Available in cassettes and bulk bottles, the high performance Mild Solvent Plus inks provide good saturation, resulting in brilliant colours and a wide colour gamut. These inks have excellent drying and drop fixation characteristics, for fast printing on uncoated media. For speed-intensive, volume-oriented users, Mutoh has an optional Bulk Ink System, providing ink autonomy of 4.3 litres per bottle.



## Ready for Volume Printing

Unattended roll-to-roll printing is possible with the fully motorised heavy-duty unwinding/winding system for media rolls up to 100 kg. The unwinder/winder 100 system ensures the Spitfire Extreme is ready to handle volume production.



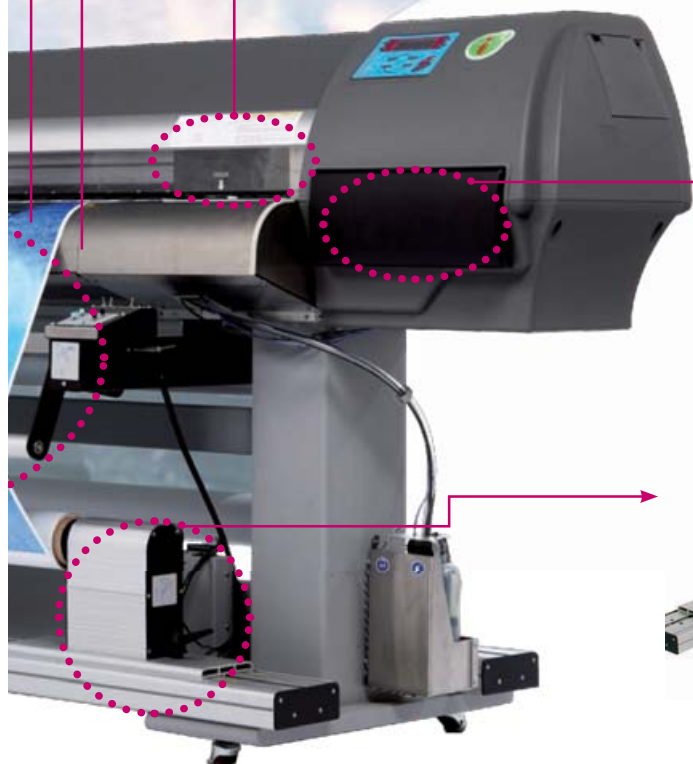
## Durable Prints

Mutoh Mild Solvent Plus inks resist cleaning products, detergents and commercially available degreasers as well as true solvent inks. Outdoor durability of prints is up to 3 years\*.

General purpose signs do not require lamination\*\*.

\* Based on accelerated weather tests. Northern European Standards.

\*\* For heavy-duty applications where mechanical stress is involved (floor & vehicle graphics), lamination is required. Allow stabilising time before laminating.





>> Spitfire 65 Extreme with 30 kg tension winder

Printer specifications	Spitfire 65 Extreme	Spitfire 90 Extreme
Technology	Drop-on-demand Micro Piezo Inkjet Technology. Variable drop mass output between 5.4 ng and 41.5 ng	
Maximum Media Widths	1651 mm	2280 mm
Maximum Print Widths	1641 mm	2240 mm
Media Thickness	Range: 0.08 mm – 1.1 mm	
Diameter / Core	Maximum: 300 mm / 2" or 3"	
Weight	Maximum: 100 kg	
Media Thickness Compensation	Automatic media thickness compensation. Variable – RIP controlled – Head Height	
Resolutions	360 x 360 dpi, 720 x 360 dpi, 540 x 720 dpi & 720 x 720 dpi	
Colour Channels	8 colour channels – 4 or 6 process colour output	
Inks	Mutoh Mild Solvent Plus 2 x CMYK speed set-up	
Ink Capacity / Type	Cassettes - 440 ml / smart chip ink type & order sensing Bulk bottles – 1 liter	
Print Modes & Panel Control Options	Uni & Bi-directional output, Intelligent Interweaving, Mirror Output, Multi Copy, Ink Status, Origin Control.	
LCD Display	Backlight LED – 4 lines x 20 characters	
Interface	Centronics, IEEE 1284 compatible / Network, High Speed Interface (standard high-speed interface card – 4 Mb/s).	
Graphics Command Language	RTL-PASS	
Print Engine Working Environment using Mild Solvent Plus inks	Temperature: 20 – 30 °C ( $\Delta t$ max 2 °C/h) Relative Humidity: 40 – 65 % (no condensation - $\Delta RH$ max 5 % RH/h)	
External Dimensions in mm (W x D x H) (Excl. Unwinder / Winder 100)	3100 x 750 x 1250 mm	3700 x 750 x 1250 mm
Weight	195 kg	215 kg
Power Consumption	1300 VA 80 VA in stand-by mode	1400 VA 100 VA in stand-by mode
Power Supply	AC 100 – 120V / AC 220 – 240V auto-switching	
Noise Level	Operating: 54 dB or less	
Regulatory Approvals	CE Mark, FCC Class A, ICES Class A, CSA, CB	

Specifications are liable to changes without prior notice. All trademarks mentioned are property of their respective owners. The machines depicted on this brochure do not necessarily show a standard configuration. For some products, customised configurations are available. For further information, please contact your nearest Mutoh Authorised Reseller. Images in printer courtesy of & copyrighted by Joris Luchtigheid, www.werkinopdracht.nl & Goldwell, www.goldwell.com.

# MUTOH

MUTOH EUROPE nv  
Tel.: 32-(0)59-56 14 00  
Fax: 32-(0)59-80 71 17  
E-mail: [mutoh@mutoh.be](mailto:mutoh@mutoh.be)  
<http://www.mutoh.eu>  
<http://www.mutoheurope.com>

MUTOH Deutschland GmbH  
Tel.: 49-211-385474-0  
Fax: 49-211-385474-74  
E-mail: [Mutoh-Sales@t-online.de](mailto:Mutoh-Sales@t-online.de)  
<http://www.mutoh.de>

Distributed by:



## **Maximize your Profit with Mutoh Intelligent Interweaving (i<sup>2</sup>) Print Technology!**

Mutoh i<sup>2</sup> technology will deliver you an unprecedented level of user comfort, allowing you to effortlessly deliver the right quality at the lowest cost possible.

Per printer incorporating Mutoh i<sup>2</sup> technology, a “guided printer setup” is available, allowing you to easily select the most suitable print mode and moreover to predict how long printing will take.

### **Take three simple steps to increase efficiency and productivity in your print business...**

No more over-specified print jobs, taking longer and costing more than necessary.

No more under-specified print jobs, leading to inferior quality with the risk of repeat work or lost business.

Mutoh’s “guided printer setup” will allow you to continuously deliver fit for purpose print quality.

All you need to take into account when working with a Mutoh Spitfire 65/90 Extreme printer is three different criteria linked to the purpose for which the print will be used :

1. **Viewing distance:** less than 1 m, more than 1 m, more than 3 m, in excess of 5 m.



2. **Image type:** is it a sign that requires maximum print quality, or a less demanding picture that can be printed faster?



3. **Image content:** Is there a lot or not so much detail.

**Discover the comfort of Mutoh i<sup>2</sup> technology on Spitfire 65/90 Extreme at [www.mutoh.eu/interweaving](http://www.mutoh.eu/interweaving)**



## Mutoh i<sup>2</sup> for real life prints

With i<sup>2</sup>, intelligent interweaving technology, Mutoh has developed a guided printer setup for each printer.

Users can effortlessly select the most suitable print mode and predict how long printing will take.

Visit [www.mutoh.eu/interweaving](http://www.mutoh.eu/interweaving) to discover how it works....

### Discover the comfort of i<sup>2</sup>. MUTOH Select any Mutoh Printer.

<b>Blizzard 65</b> 	<b>Blizzard 90</b> 	<b>Rockhopper 3 Extreme 65"</b> 	<b>Rockhopper 3 Extreme 90"</b> 	<b>Spitfire 65 Extreme</b> 
<b>Spitfire 90 Extreme</b> 	<b>Spitfire 100 Extreme</b> 	<b>ValueJet 1204</b> 	<b>ValueJet 1304</b> 	<b>ValueJet 1614</b> 

[BACK TO MENU](#)

### Spitfire 65 Extreme Predict the i<sup>2</sup> output result MUTOH

#### 1) Select the VIEWING DISTANCE

	<b>VIEWING DISTANCE LESS THAN 1 M</b> 	<b>VIEWING DISTANCE MORE THAN 1 M</b> 
<b>2</b>	<b>SIGN/PICTURE</b>	<b>SIGN</b> / <b>PICTURE</b>
	<b>DETAILED</b>	<b>DETAILED</b> / <b>DETAILED</b>
	<b>LESS DETAIL</b>	<b>LESS DETAIL</b> / <b>LESS DETAIL</b>

[BACK TO MENU](#) [BACK TO PRINTER CHOICE](#)

### Spitfire 65 Extreme Predict the i<sup>2</sup> output result MUTOH

#### 2) Select the IMAGE TYPE

	<b>VIEWING DISTANCE LESS THAN 1 M</b> 	<b>VIEWING DISTANCE MORE THAN 1 M</b> 
<b>2</b>	<b>SIGN</b> = large areas of solid colours and high resolution rates = higher quality	<b>SIGN</b> / <b>PICTURE</b>
	<b>PICTURE</b> = suited to the origin of business and always same resolution	<b>DETAILED</b> / <b>DETAILED</b>
	<b>SIGN/PICTURE</b>	<b>LESS DETAIL</b> / <b>LESS DETAIL</b>

[BACK TO MENU](#) [BACK TO PRINTER CHOICE](#)

### Spitfire 65 Extreme Predict the i<sup>2</sup> output result MUTOH

#### 3) Select the IMAGE CONTENT

	<b>VIEWING DISTANCE LESS THAN 1 M</b> 	<b>VIEWING DISTANCE MORE THAN 1 M</b> 
<b>2</b>	<b>SIGN/PICTURE</b>	<b>SIGN</b> / <b>PICTURE</b>
	<b>DETAILED</b>	<b>DETAILED</b> / <b>DETAILED</b>
	<b>LESS DETAIL</b>	<b>LESS DETAIL</b> / <b>LESS DETAIL</b>

[BACK TO MENU](#) [BACK TO PRINTER CHOICE](#)

### Spitfire 65 Extreme Predict the i<sup>2</sup> output result MUTOH

**Result: 540 dpi, 2 pass, 16,5 m<sup>2</sup>/h**

	<b>VIEWING DISTANCE LESS THAN 1 M</b> 	<b>VIEWING DISTANCE MORE THAN 1 M</b> 
<b>2</b>	<b>SIGN/PICTURE</b>	<b>SIGN</b> / <b>PICTURE</b>
	<b>DETAILED</b>	<b>DETAILED</b> / <b>DETAILED</b>
	<b>LESS DETAIL</b>	<b>LESS DETAIL</b> / <b>LESS DETAIL</b>

[BACK TO MENU](#) [BACK TO PRINTER CHOICE](#) [NEW SEARCH?](#)